



RESIDENTIAL EVAPORATIVE AIR COOLERS

8" / 12" / 4 x 4 RIGID MEDIA MODELS PROVIDE RELIABLE AND EFFICIENT
EVAPORATIVE AIR COOLING FOR YOUR HOME



ENVIRONMENTALLY FRIENDLY

The simple concept of mixing air and water produces powerful, energy efficient cooling that is both economical and environmentally friendly.

The AeroCool® and the AeroCool® Pro Series combine worry-free operation and low maintenance with industry leading advancements and reliability.



U.L. Listed Models
also available

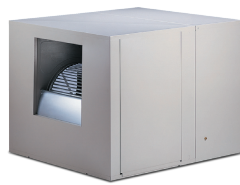
VERSATILITY, RELIABILITY & COMFORT

Utilizing a single inlet design, AeroCool provides the ultimate protection available for the longevity of your cooler. Fully lined in a tough plastic shield, the all-metal construction of the wet module is protected from the damaging effects of typical deposits found in most water systems. High efficiency evaporative cooling, low maintenance, and a long life of AeroCool makes these coolers your award winner.

Responding to your specific requirements, these units are available in three models: down, side, and up discharge for concealed ground level applications.



DOWN DRAFT
TD MODEL



SIDE DRAFT
TH MODEL



UP DRAFT
TUP MODEL



CHOOSING THE RIGHT MODEL TO MEET YOUR NEEDS

Choosing the right AeroCool Series model is important for proper operation. All AeroCool air coolers use efficient Rigid Media and are available in three levels of cooling efficiency.

AeroCool Series coolers are designed to operate at maximum efficiency with minimal maintenance. The Rigid Media gives the ability to deliver colder air while reducing the time spent replacing standard aspen media.

For maximum performance, choose the model with the proper rating and motor as well as the correct duct configuration. Ask your qualified contractor to help you choose the correct AeroCool model that best fits your home and your needs.

FEATURES

RELIABLE LOW SUMP PUMP

The most powerful pump on the market today.

PRO-ARMOR WET SECTION LINER

The polymeric inner structure completely shields the wet section from corrosive interaction, providing long life and worry free operation.

FLOMATE

Quality water distribution system.

EASY ACCESS, GRAVITY HELD DOORS

Easy to remove access doors reduce maintenance time.

PEBLAR XT PROTECTIVE POWDER COAT

Our exclusive Peblar XT surface preparation is the highest quality architectural grade finish used in the industry. This durable, multi-layer bonded treatment protects your cooler against corrosion and ensures years of reliable service.



8" STANDARD RIGID MEDIA

The 8" media is a good economical choice for high efficiency cooling. It provides increased cooling performance over traditional aspen media pads and has 80% saturation efficiency.

12" STANDARD RIGID MEDIA

The ultra-efficient 12" media is the best choice where maximum cooling efficiency is required. This media provides 89% saturation efficiency.

MIRRO-SCOPIC™ BLOWER SHAFT FINISH

Our exclusive Mirro-Scopic Blower shaft finish process yields a 90% improvement over the industry standard "ground finish". This means quieter operation as well as longer bearing and shaft life for your cooler!

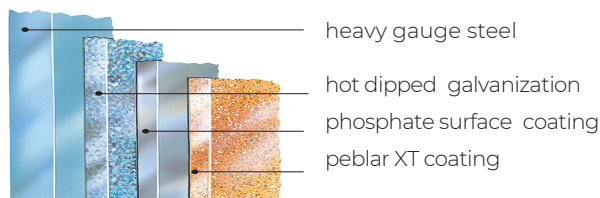
RELIABLE MOTOR *

High-torque, belt drive motors are recognized by Underwriters Laboratories.

UL Listed Models also available. When specifying or ordering U.L. Listed models, add a "U" prefix to the front of the appropriate model number.

EXAMPLE: UTD6801

* Motor kits sold separately. In order to maintain U.L. Classified or Listed designation, these models must be used in conjunction with PMI supplied motor kits and pumps.



AEROCOOL PRO SERIES

PERFORMANCE & CONVENIENCE

The AeroCool Pro Series evaporative air cooler, with its integrated systems, works hard to help maintain performance and efficiency while allowing you more time to - Live Your Life in Comfort.

The AeroCool Pro Series features the Pro-4 x 4 High Efficiency Media to provide the coolest air possible, employing the Pro-Clean System to maintain the entire system.

The Pro-Clean System maintains the cleanliness of your evaporative cooler by automatically draining the cooler and refilling with fresh, clean water, thus avoiding scale build-up. The water used in the evaporative process is stored inside the fully encapsulated Pro-Armor wet section.

The AeroCool Pro Series includes the Pro-Shield weatherizing panel for use in the off-season to prevent heat loss and unwanted air from entering the home during colder months. Defending the media from the elements of winter can also extend the life of your unit.

Set the comfort level for you and your family and the AeroCool Pro Series evaporative air cooler does the rest. Combined with the Pro-Stat programmable thermostat, the AeroCool Pro Series will automatically and efficiently operate the equipment to best maintain your comfort level while using the least amount of energy.

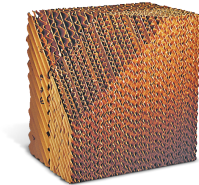


FEATURES

AeroCool Pro series includes all of the standard AeroCool features plus the following:

UPGRADED PRO SERIES 4 X 4 HI-EFFICIENCY MEDIA

Because this blend of media has a 93% saturation efficiency, our 4 x 4 Pro Series coolers can deliver colder air than any other home comfort evaporative cooler.



PRO-CLEAN SYSTEM

Drains and washes the unit daily and can save 1,000's of gallons of water over the cooling season as compared to a standard bleed-off system.

PRO SERIES FACTORY INSTALLED 2 SPEED MOTOR

All components are completely pre-wired by the factory, thus reducing installation time and increasing reliability.

PRO THERMOSTAT

The cooler's "brain" saves money by giving just the right amount of cool all the time. The "Softspeed Transition" feature creates smoother operation when the motor automatically changes speed.

- Backlit display panel
- 12/24 hour time of day / month / year clock
- Fully programmable 24 / 7 / 4 events / day
 - 5-1-1 (M-F, Sat, Sun)
 - 5-2 (M-F, weekends)
 - Individual days / combination of days
 - All 7 days exactly the same



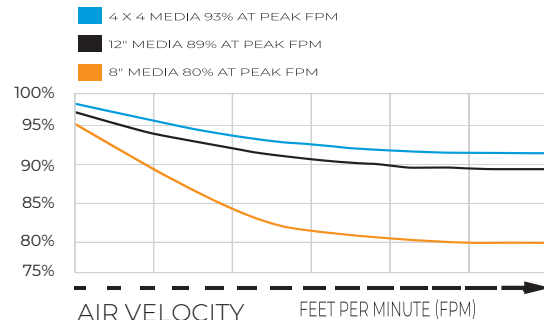
PRO-SHIELD

The weatherizing panel prohibits outward heat loss and cold air from entering into your home during the off-season. Easy to install, media protection is also afforded, increasing the life of the unit.

AEROCOOL FEATURES COMPARISON

	AEROCOOL PRO SERIES	PRO SERIES
Reliable low sump pump	●	●
Pro-Armor wet section liner	●	●
Flomate water distribution system	●	●
Easy access gravity held doors	●	●
Peblar XT protection	●	●
Mirro-Scopic™ blower shaft finishing	●	●
Pro-Shield winterizing panel	Optional	●
8" & 12" standard rigid media	●	
4 x4 hi-efficiency media		●
Pro-Clean system		●
Factory installed 2-speed motor with 3 year warranty		●
Pro Thermostat		●

COOLING EFFICIENCY



SPECIFICATIONS:

AEROCOOL SERIES All AeroCool Models are UL Classified, include 120 V pump. Motors sold separately *

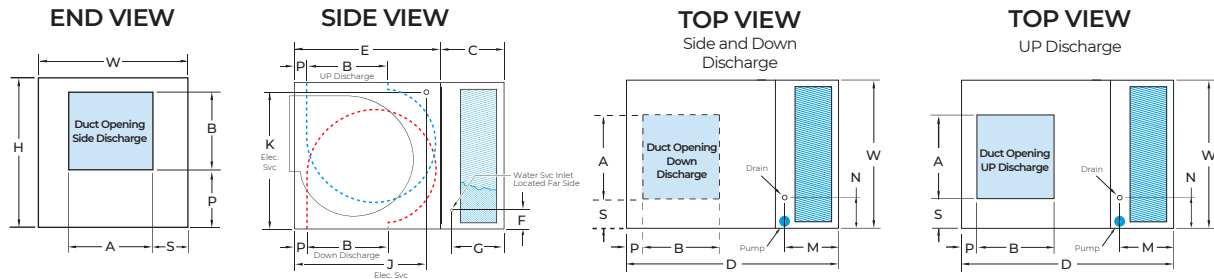
MEDIA TYPE	MODEL NUMBER TH or PH = SIDE DISCHARGE TD or PD = DOWN DISCHARGE TUP = UP DISCHARGE	INDUSTRY STANDARD RATING *	AIR DELIVERY CFM (CUBIC FEET PER MINUTE)						ELECTRICAL SPECIFICATIONS			
			0.0'	0.1'	0.2'	0.3'	0.4'	0.5'	HP	SPEED	VOLTS	AMPS
8" MEDIA	TD / TH 3800C	3800	2021	1939	1879	1711	1509	1203	1/3	2	120	7.4
	TD / TH 4801C	4400	3329	3035	2816	2623	2429	2235	1/2	2	120/240	9.0/5.3
	TD / TH 4801C	4800	3875	3619	3440	3286	3132	2978	3/4	2	120/240	11.5/6.0
	TD / TH / TUP 6801C	5800	4250	4125	4000	3850	3650	3425	3/4	2	120/240	11.5/6.0
	TD / TH / TUP 6801C	6800	4750	4600	4475	4375	4250	4050	1	2	120/240	13.3/6.9
12" MEDIA	TD / TH 4812C	4400	2860	2790	2645	2350	2030	1890	1/2	2	120/240	9.9/5.9
	TD / TH 4812C	4800	3270	3220	3190	2940	2650	2350	3/4	2	120/240	12.4/6.6
	TD / TH / TUP 6812C	5800	4130	4000	3820	3630	3375	2740	3/4	2	120/240	12.4/6.6
	TD / TH / TUP 6812C	6800	4551	4440	4300	4080	3940	3680	1	2	120/240	14.2/7.6

* In order to maintain UL Classified or UL Listed designation, these models must be used in conjunction with PMI supplied motor kits and pumps.

AEROCOOL PRO SERIES All AeroCool Pro Models are UL Classified, include installed 120 V motor and pumps, ProStat thermostat and controls.

4 x 4 MEDIA	PD / PH 4803C	4800	3450	3200	3050	2950	2500	2310	3/4	2	120	11.9
	PD / PH 6803C	6800	4430	4310	4135	3990	3695	3460	1	2	120	14.2

* Industry Standard Rating - represents a numeric index for use in comparing units of different manufacturers.



MEDIA TYPE	MODEL NUMBER	CABINET			DUCT OPENING			WATER SVC Location		ELEC SVC Location		DRAIN Location		BLOWER WHEEL		SHAFT Dia	BELT LENGTH	PULLEY Dia	SHIP WT	OPER WT			
		H	W	D	A	B	C	E	F	G	J	K	M	N	P						S	DIA x WIDTH	
8" MEDIA	TD3800C	25 3/4	33	43	16	16	17	26	4 3/8	13 1/2	22 3/4	22 3/4	13 1/2	5 1/2	1 1/2	8 1/2	13	13	1	46	8	115	130
	TH3800C	25 3/4	33	43	16	16	17	26	4 3/8	13 1/2	22 3/4	22 3/4	13 1/2	5 1/2	1 1/2	8 1/2	13	13	1	46	8	115	130
	TD4801C	27 3/4	42	43	17 3/4	17 3/4	17	26	5 1/2	13 1/2	23 1/2	24 3/8	13 3/4	13	1 1/2	12 1/8	16	16	1	54	10	161	189
	TH4801C	27 3/4	42	43	17 3/4	17 3/4	17	26	5 1/2	13 1/2	23 1/2	24 3/8	13 3/4	13	8	12 1/8	16	16	1	55	10	161	189
	TD6801C	34 3/4	42	45	19 3/4	19 3/4	17	28	5 1/2	13 1/2	25 1/2	31 3/8	13 3/4	13	1 1/2	11 1/8	19	18	1	62	12	198	220
	TH6801C	34 3/4	42	45	19 3/4	19 3/4	17	28	5 1/2	13 1/2	25 1/2	31 3/8	13 3/4	13	11 1/2	11 1/8	19	18	1	65	12	198	220
12" MEDIA	TUP6801C	34 3/4	42	45	19 3/4	19 3/4	17	28	5 1/2	13 1/2	25 1/2	31 3/8	13 3/4	13	1 1/2	11 1/8	19	18	1	65	12	198	220
	TD4812C	27 3/4	42	47	17 3/4	17 3/4	21	26	5 1/2	17 1/2	23 1/2	24 3/8	17 3/4	13	1 1/2	12 1/8	19	18	1	54	10	177	212
	TH4812C	27 3/4	42	47	17 3/4	17 3/4	21	26	5 1/2	17 1/2	23 1/2	24 3/8	17 3/4	13	8	12 1/8	19	18	1	55	10	177	212
	TD6812C	34 3/4	42	49	19 3/4	19 3/4	21	28	5 1/2	17 1/2	25 1/2	31 3/8	17 3/4	13	1 1/2	11 1/8	19	18	1	62	12	214	257
4x4 MEDIA	TH6812C	34 3/4	42	49	19 3/4	19 3/4	21	28	5 1/2	17 1/2	25 1/2	31 3/8	17 3/4	13	11 1/2	11 1/8	19	18	1	65	12	214	257
	TUP6812C	34 3/4	42	49	19 3/4	19 3/4	21	28	5 1/2	17 1/2	25 1/2	31 3/8	17 3/4	13	1 1/2	11 1/8	19	18	1	65	12	214	257
	PD4803C	27 3/4	42	43	17 3/4	17 3/4	17	26	5 1/2	13 1/2	23 1/2	24 3/8	13 3/4	13	1 1/2	12 1/8	16	16	1	54	10	177	195
	PH4803C	27 3/4	42	43	17 3/4	17 3/4	17	26	5 1/2	13 1/2	23 1/2	24 3/8	13 3/4	13	8	12 1/8	16	16	1	55	10	177	195
4x4 MEDIA	PD6803C	34 3/4	42	45	19 3/4	19 3/4	17	28	5 1/2	13 1/2	25 1/2	31 3/8	13 3/4	13	1 1/2	11 1/8	19	18	1	62	12	217	232
	PH6803C	34 3/4	42	45	19 3/4	19 3/4	17	28	5 1/2	13 1/2	25 1/2	31 3/8	13 3/4	13	11 1/2	11 1/8	19	18	1	65	12	217	232

AEROCOOL EVAPORATIVE COOLERS and components are designed and tested in accordance with one or more of the following standards or agencies. **AIR DELIVERY** - data published derived from tests conducted in accordance with Air Movement and Control Assoc. standard 210. **EVAPORATIVE MEDIA** - Specially Corrugated Cellulose Materials, impregnated with insoluble anti-rot salts and rigidifying saturants. **SEALANT** - water immersion per ASTM D870. **FLEXIBILITY** - per ASTM D756. **CORROSION RESISTANCE** - per ASTM B117. **PENCIL HARDNESS** - per ASTM D3363. **IMPACT RESISTANCE** - per D2794. **FLEXIBILITY** - per ASTM D522. **SPECULAR GLOSS** - per ASTM 523. **SURFACE BURNING CHARACTERISTICS** - of building materials (best rating) per UL 723 and ASTM E-84. **PUMPS** recognized under UL 778 and UL 507 for operating water pumps with thermal overload and locked rotor protection. **POLYMERIC MATERIALS** listed in accordance with UL 94 and 746C. **MOTORS** recognized under UL component standard #1004 for motor construction. **MOTORS** tested under UL 507 for locked rotor and heat rise protection.

Phoenix Manufacturing, Inc. produces this equipment, with pride and craftsmanship, in the U.S.A. As a leader in our country's evaporative cooler industry, we continuously strive to offer product improvements and reserve the right to change specifications and designs without notice.

U.L. Listed Models also available. When specifying or ordering U.L. Listed models, delete the "C" suffix and add a "U" prefix to the front of the model number. **EXAMPLE: UTD6801C**



3655 East Roesser Road

Phoenix, Arizona 85040

Ph: 602-437-1034 / Fax: 602-437-4833
WWW.PHOENIXMANUFACTURING.COM



WARNING: This product can expose you to chemicals including Lead, which is known to the State of California to cause cancer and birth defects or other reproductive harm. For more information go to www.P65Warnings.ca.gov